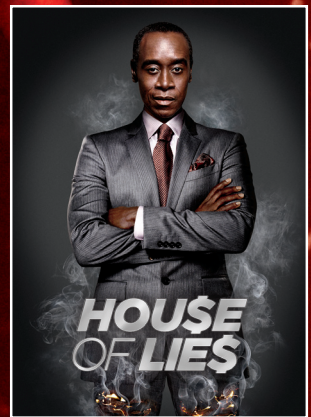


→ **IT PAYS**
TO ADD SHOWTIME®

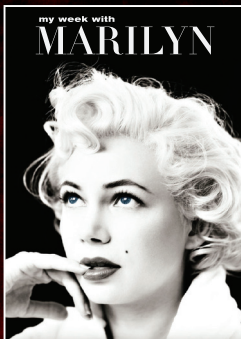
“...SHOWTIME HAS BECOME, ARGUABLY,
CABLE’S BUZZIEST NETWORK.”

—THE HOLLYWOOD REPORTER

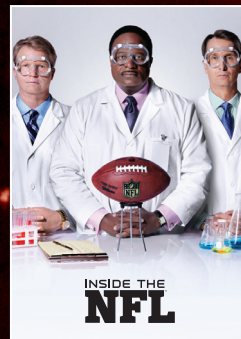
SHOWTIME® ORIGINAL SERIES



HOLLYWOOD HITS



SHOWTIME SPORTS



Receive up to **\$7/unit** for launching or **\$5/unit** for renewing
a SHOWTIME® bulk subscription!

See back for details.

SHOWTIME®
BRACE YOURSELF

SHOWTIME HD®

Visit SHO.COM/LOGGING or call 1-866-481-SHOW to learn more!

2013 SHOWTIME® DIRECT-TO-PROPERTY INCENTIVE



Your property can receive *CASH* FOR EVERY UNIT when you launch or renew SHOWTIME® in 2013!

LAUNCH SHOWTIME®
IN BULK AND YOUR PROPERTY CAN RECEIVE:

- \$7.00 PER UNIT** WITH A 5 YEAR OR LONGER COMMITMENT.
- \$5.00 PER UNIT** WITH A 3 OR 4 YEAR COMMITMENT.

RENEW SHOWTIME®
IN BULK AND YOUR PROPERTY CAN RECEIVE:

- \$5.00 PER UNIT** WITH A 3 YEAR OR LONGER COMMITMENT.

PROPERTY NAME

ADDRESS

CITY/STATE/ZIP

PROPERTY MGMT. CO.

PROPERTY CONTACT NAME

CONTACT TITLE | PHONE

EMAIL | FAX

FED TAX ID

TAX REPORTING / BUSINESS NAME

CORPORATION . . . PARTNERSHIP: LLC . . . LLP . . . LP . . . OTHER

SHOWTIME LAUNCH / RENEWAL DATE | SHOWTIME EXPIRATION DATE

SHOWTIME DISTRIBUTOR | SHOWTIME DISTRIBUTOR CONTACT / PHONE

LAUNCHED NUMBER OF UNITS X \$5.00 (3 OR 4 YEAR TERM) = \$ **TOTAL SUPPORT**

LAUNCHED NUMBER OF UNITS X \$7.00 (5+ YEAR TERM) = \$ **TOTAL SUPPORT**

RENEWED NUMBER OF UNITS X \$5.00 (3+ YEAR TERM) = \$ **TOTAL SUPPORT**

I UNDERSTAND ALL TERMS, RESTRICTIONS AND CONDITIONS OF THIS INCENTIVE AND CERTIFY THAT ALL INFORMATION I HAVE PROVIDED IS FACTUAL.

PROPERTY CONTACT SIGNATURE | DATE

TO RECEIVE PAYMENT

Launch or renew SHOWTIME® in bulk between January 1, 2013 and December 31, 2013.

Complete and mail in this form.

Attach a copy of the executed contract with an authorized SHOWTIME® distributor. Contract must include your property's name, address, city, state, zip code, term and number of units launching or renewing SHOWTIME®.

Carry SHOWTIME® for the entire term for which your property is applying for support.

MAIL FORM AND ATTACHMENTS TO:

DEBBIE BREINER
SHOWTIME NETWORKS INC.
980 HAMMOND DRIVE, SUITE 725
ATLANTA, GA 30328

QUESTIONS? CALL
(770) 698-6929

→ **SHO.COM/LODGING**

RESTRICTIONS & CONDITIONS

- One-time support incentive is available from Showtime Networks Inc. ("SNI") for qualified properties that launch or renew SHOWTIME in bulk between January 1, 2013 and December 31, 2013.
- Qualified properties include hotels, motels, timeshares, hospitals, universities, apartment complexes, condos, homeowner associations and others that launch or renew, and carry, SHOWTIME in 100% of units.
- SNI reserves the right to determine property eligibility.
- Properties are only eligible for one SNI support incentive.
- Payment is based on a fully executed and binding contract with an authorized SHOWTIME distributor that clearly states SHOWTIME is a part of the entertainment package.

- Property must carry SHOWTIME in bulk for the entire term for which property is applying for support, for a minimum of 3 years. If it does not, then the property must reimburse SNI all launch or renewal support dollars received.
- Hotels and motels must make SHOWTIME available on a free-to-the-guest basis.
- SNI reserves the right to discontinue this support incentive at any time by notice posted on sho.com/lodding.
- For launch support, property cannot have carried SHOWTIME at any time during the 90-day period immediately preceding January 1, 2013.
- Form and contract must be received by SNI by January 10, 2014 for processing.
- All payments will be paid by check. Please allow 8-10 weeks for delivery of check.
- Submission of this form constitutes agreement to all terms, restrictions and conditions.

Source: The Hollywood Reporter. ©2013 Showtime Networks Inc. All rights reserved. SHOWTIME and related marks are trademarks of Showtime Networks Inc., a CBS Company. "Dexter®" & "House of Lies": ©Showtime Networks Inc. All rights reserved. "Homeland": ©Twentieth Century Fox Film Corporation. All rights reserved. "Shameless": ©Warner Bros. Entertainment Inc. All rights reserved. "Inside The NFL™": ©NFL Productions LLC. All NFL-related names, marks, and logos are trademarks of the National Football League. All rights reserved. "The Twilight Saga: Breaking Dawn, Part 1": ™ & ©2012 Summit Entertainment, LLC. All rights reserved.